



**WAYNE COUNTY  
GEM AND MINERAL CLUB  
NEWS**  
VOLUME 34 No. 9 september 2008



**OFFICERS:**

**PRESIDENT:**

Stan Griffin 315-462-3282

**VICE PRESIDENT:**

Jerold Donahue 315-548-8085

**SECRETARY:**

R Remington  
beqster65@yahoo.com

**TREASURER/**

**MEMBERSHIP CHAIR:**

Bill Lesniak 315-483-8061

**PROGRAM \*:**

Andrea Kords 315-926-1401

**HOSPITALITY:**

Pat Chapman 607-868-4649

**FIELD TRIP CHAIR:**

Bill Chapman 607-868-4649

**DIRECTORS:**

Ken and Roxanne Rowe  
315-331-1438

Pat Chapman 607-868-4649

Terry Wilson 315-462-9222

**PAST PRESIDENT:**

Dave Kords 315-986-1171

**EDITOR:**

Rebecca Remington  
315-926-1155

**Mini-Miners:**

Bill Chapman 607-868-4649  
Heather Bornemann  
Julie Zeller

**President's Message**

Hi, all! This month, we are hosting a special guest at our Sept meeting because, as rockhounds, the earth is our favorite place to keep beautiful. Recycler Bill L. will demonstrate how to recycle those old drapery hooks into inexpensive wire display stands for midsized minerals. Have any of those drapery hooks? Bring them along with a pair of pliers and we will all learn a lot, have a great time, and help do our part to recycle. Hope to see everyone after what has been a busy, busy summertime! Bring some refreshments and energy! Until then, read on... **---Your President,**



**WHEATON COLLECTION SALE**

**DATES**--Saturday, Oct 11th AND Sunday, Oct 12, 2008. 9 AM – 6 PM.

**PLACE**--580 State Rt. 88 – 2 miles south of Newark, NY.

**WHAT**---100's of specimens, tools, stone cutting equip. & more.

For info, contact Ken Rowe gotrox88@yahoo.com or visit [www.wcgmc.org](http://www.wcgmc.org)

Get \$.50 off your purchase of \$1 or more with this ad. Limit one per person but valid for each family member.

**BARTON MINE FIELD TRIP INVITE:**

Dear Wayne County Club--I am planning a group trip to the Barton Garnet mine this month. Do you have anyone in your club that would like to come with us? The two weekends we are looking at are: 9/13-9/14 and 9/20-9/21. If you have someone that would like to go please have them contact me directly at this email address. If they do not have computer access they can call my cellular phone: 585-747-8494. Have a great day. Kim Pandina kim@pandajewels.com or [www.pandajewels.com](http://www.pandajewels.com)

**GET READY FOR THE ANNUAL OCTOBER 2008  
WAYNE COUNTY ROCK GEM & MINERAL SHOW**

Once again, the American Hobby Shop, of Walworth, NY (with a new location) has announced the dates for the Annual October Show as Oct 5<sup>th</sup> and 6<sup>th</sup>, 2008. Starting with set-up on the 4<sup>th</sup>, vendors plus WCGMC members will gather at St. Michael's school (Route 88 South, Newark) to buy, sell, network, and socialize. WCGMC members invited to set up displays. Family friendly! Kids welcome with adult supervision. Featured: Minerals, Meteorites, Fossils, Gem Trees, Moldavites, Finished Products & Rough Lapidary Supplies. Door Admission. Info? Contact David & Andrea Kords or the Hobby Shop.

## EFTA Field Trip

### **Dolomite Quarry --- Walworth, NY**

**Sat. Oct 11<sup>th</sup>: 7AM – 2PM. and Sun. Oct 12<sup>th</sup>: 7AM – Noon.**

***fluorite, sphalerite, calcite, dolomite, & quartz crystals***

**Wayne Co. Gem & Mineral Club has been invited to attend.**

#### Working quarry rules:

- 1. No one under 12 without supervision.**
- 2. Bathroom facilities available.**
- 3. Mandatory RSVP 2 weeks in advance so the quarry may be notified of our numbers although there is generally no overall attendance limit. If there is last minute changes, come anyway. Things will work out.**
- 4. Mandatory Safety Meeting at 6:45am each morning.**
- 5. Contact Bill Chapman at batnpill@empacc.net for details & rsvp**

## ROCK-HOUNDING AND FINDING U.S.A.

**Sept 13 AND 14th 2008: Mechanicsburg, Pennsylvania**

*43rd Annual Gem, Mineral, and Jewelry Show*

**Sept 27th and 28th 2008: Franklin, New Jersey**

*52nd Annual Franklin-Sterling Hill Mineral, Gem, and Jewelry Show*

**27-28 Sept 27<sup>th</sup> and 28th 2008: West Friendship, Maryland**

*44th Annual Atlantic Coast Gem, Mineral & Jewelry Show*

**Oct 4<sup>th</sup> 2008: Autumn Mineralfest (Macungie, Pennsylvania)**

*51st semi-annual Mineralfest –*

**Oct 12th 2008: Elkridge, Maryland**

*Paul Desautels Micromount Symposium*

**Oct 11<sup>th</sup> and 12th 2008: Worthington, Pennsylvania**

*Rock, Gem and Jewelry Show*

**Oct 18<sup>th</sup> and 19th 2008: Johnstown, New York**

*Mineral, Fossil, Jewelry, Gem, Gift Show and Sale*

**Oct 25th 2008: Ultraviolation (Fairless Hills, Pennsylvania)** 19th annual

*fluorescent-only mineral show / swap / sell*

**Oct 25th 2008: South Penn Rock Swap (Arendtsville, Pennsylvania)** 24th Annual

*South Penn Rock Swap*

**Oct 25<sup>th</sup> and 26th 2008: Henrietta, New York** *Gem, Mineral, Jewelry, and Fossil*

*Show Organized by: Rochester Academy of Science, Mineral Section and Rochester*

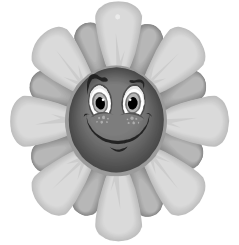
*Lapidary Society Monroe County Fair & Expo Center*

## UPCOMING WCGM CLUB MEETINGS

### SEPT 12, 2007 (Friday) Park Presbyterian Church, Newark

Board meeting at 7pm. Regular meeting at 7:30pm Mini-Miners meeting at 7:30pm.

**Recycler Bill L. will demonstrate how to turn those old drapery hooks into inexpensive wire display stands for your mid-sized minerals. If you have any of those drapery hooks bring them along with a pair of pliers. \_\_\_\_\_ refreshments --- \_\_\_\_\_ door prize**



**OCT 10, 2007 (Friday) Park Presbyterian Church, Newark**  
**DETAILS TO BE ANNOUNCED**

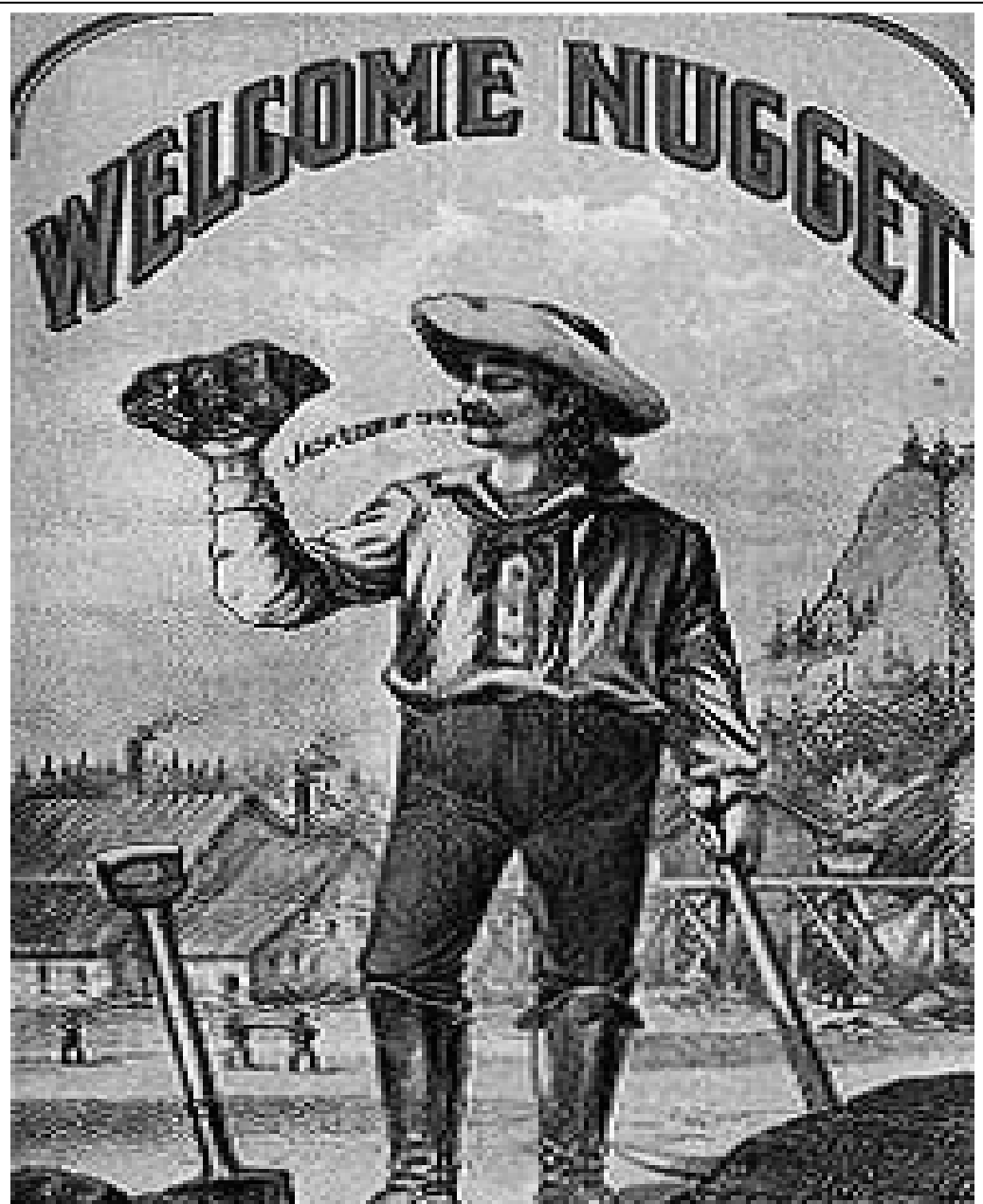
### CLUB NEWS TO dig - Kudos, too!

1. Coming soon there will be a review of the expiring terms for the club's officers this fall. Check your terms. Check the by-laws.
3. **Piz: submit newsletter articles in writing BEFORE the 22nd of the month.**
4. **MOTOR HOME for sale.** Call Stan for info. 315-462-3282.
5. Are you getting these newsletters? Please contact the editor if not.

### FREE WALLPAPER

Quick, grab yourself some wallpaper images before someone notices your bare desktop! These wallpapers are good background images for presentations and scientific posters. Make free use of them for desktops & presentations; any other uses fall under fair use guidelines. Go to **Geology from Ask.com!!!**

(c) 2005, 2007, 2008 Andrew Alden, licensed to About.com, Inc.



**WAYNE COUNTY GEM AND MINERAL CLUB, INC.**

**MEETINGS:** Held 2<sup>nd</sup> Friday night of each month at 7:30pm at Park Presbyterian Church basement, Maple Court, Newark, NY

**WEBSITE:** [www.wcgm.org](http://www.wcgm.org)

**ORGANIZED:** 1973 **INC.** 1976  
Affiliated with the AFML and EFMLS of Mineral Societies since 1973.

**OFFICERS:** Elected at the October meeting, taking office in November for a 2-year term.

**FISCAL YEAR:** Oct. 1<sup>st</sup> to Sept. 31<sup>st</sup>.

**\*\*NEW ANNUAL MEMBERSHIP CLASSES**

**AND DUES (due Oct 1<sup>st</sup>):**

\$10.00 JUNIOR or STUDENT

(18 yrs > with no parents in the club)

\$15.00 REGULAR or ONE SINGLE ADULT

(Over age of 18 years old)

\$20.00 FAMILY MEMBERSHIP

(Includes 2 adult votes and children)

*Send due, SASE with your info to:*

WCGMC, P.O. Box 4, Newark, NY 14513

**OBJECTIVE:** TO STIMULATE INTEREST IN THE EARTH SCIENCES, IN COLLECTING AND CLASSIFICATION OF MINERALS, AND IN THE ART OF GEM CUTTING.

**The public is welcome!!**

When you become a member, consider becoming a volunteer for the club. We all need to give a hand to keep our society functioning and enjoy the rewards. There are lots of jobs with all levels of official (titled) and unofficial participation. If you are interested in a Board of Directors position contact Stan Griffin, President, or Bill Lesniak, the Membership Chair. For insurance issues contact Bill Lesniak or Ken Rowe. Ideas for field trips (both adult & mini-miners) should be directed to Bill and / or Pat Chapman. Newsletter ideas should be directed to the editor. Equipment interests should be directed to Ken Rowe. Contact Jerry Donahue, Vice-President, for Native American interests. **WELCOME! Come on, join the Fun!**



Stamp

**Wayne County Gem and Mineral Club**  
**Rebecca Remington-editor**  
**C/o WCGMC**  
**P.O. Box 4**  
**Newark, New York 14513**



First class: dated meetings and time valued.