



WAYNE COUNTY GEM AND MINERAL CLUB NEWS

VOLUME 33 No. 12 DECEMBER 2007



OFFICERS:

PRESIDENT:

Stan Griffin 315-462-3282

VICE PRESIDENT:

Jerold Donahue 315-548-8085

SECRETARY:

R Remington
beqster65@yahoo.com

TREASURER/

MEMBERSHIP CHAIR:

Bill Lesniak 315-483-8061

PROGRAM *:

Andrea Kords 315-926-1401

HOSPITALITY:

Marion Wheaton 315-589-8710

FIELD TRIP CHAIR:

Bill Chapman 607-868-4649

DIRECTORS:

Ken and Roxanne Rowe
315-331-1438

Pat Chapman 607-868-4649

Terry Wilson 315-462-9222

PAST PRESIDENT:

Dave Kords 315-986-1171

EDITOR:

Rebecca Remington
315-926-1155

Mini-Miners:

Darryl Powell 585-289-4936
Bill Chapman 607-868-4649

Stephanie Mason
585-265-9183

President's Message

At this time of the year, let's get together as friends for awhile and enjoy each other's company. It's hard to believe that it's the end of the year. What a year we've had! Such a busy year! I hope that I might see you and your family at our annual winter dinner buffet. (Details are in the newsletter.) I would like to personally talk with each of you and any little ones to get to know *you* , *your* thoughts, *your* ideas of how we can make our club and activities that we do- and have the potential to do- be the best, most entertaining and enjoyable club around! Can we make that our joint New Year's resolution? Life is too short and too important to not make every moment count with good friends, nice people, doing a nice hobby with our loved ones. Have a wonderful season. *Your President, Stan*

"CODE OF ETHICS"

I will respect both private and public property and will do no collecting on privately owned land without permission from the owner.

I will keep informed on all laws, regulations or rules governing collecting on public lands and will observe them.

I will, to the best of my ability, ascertain the boundary lines of property on which I plan to collect.

I will use no firearms or blasting material in collecting areas.

I will cause no willful damage to property of any kind such as fences, signs, buildings, etc.

I will leave all gates as found.

I will build fires only in designated or safe places and will be certain they are completely extinguished before leaving the area.

I will discard no burning material - matches, cigarettes, etc.

I will fill all excavation holes which may be dangerous to livestock.

I will not contaminate wells, creeks, or other water supplies.

I will cause no willful damage to collecting material and will take home only what I can reasonably use.

I will practice conservation and undertake to utilize fully and well the materials I have collected and will recycle my surplus for the pleasure and benefit of others.

I will support the rockhound project H.E.L.P. (Help Eliminate Litter Please) and will leave all collecting areas devoid of litter, regardless of how found.

I will cooperate with field-trip leaders and those in designated authority in all collecting areas.

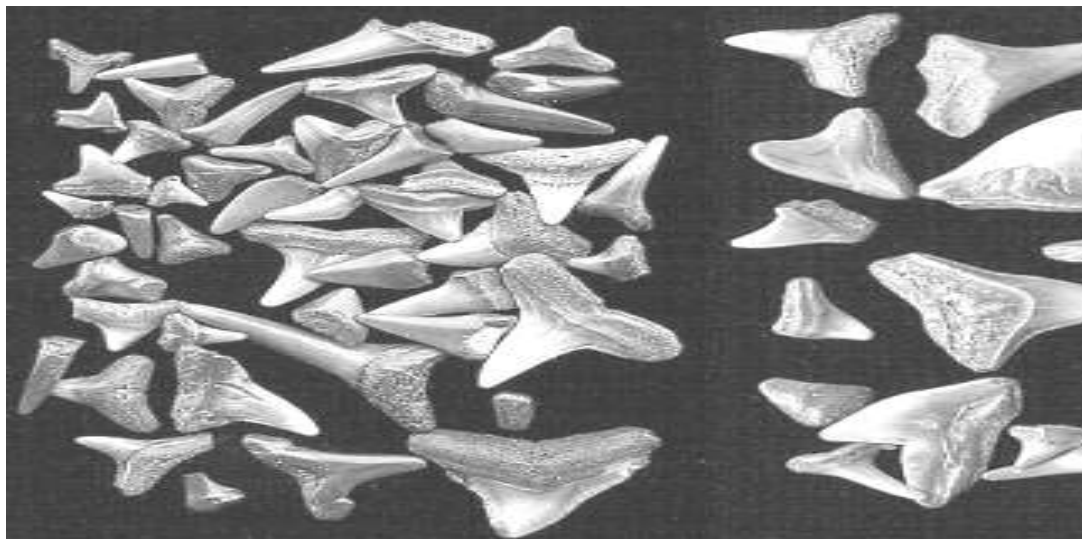
I will report to my club or federation officers, Bureau of Land Management or other authorities, any deposit of petrified wood or other materials on public lands which should be protected for the enjoyment of future generations for public educational and scientific purposes.

I will appreciate and protect our heritage of natural resources.

I will observe the "Golden Rule", will use Good Outdoor Manners and will at all times conduct myself in a manner which will add to the stature and Public Image of Rockhounds everywhere.

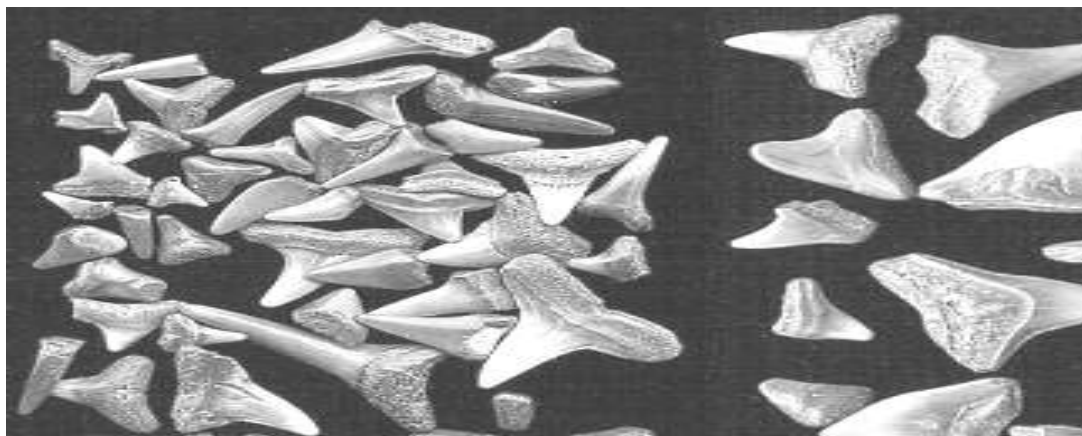
Revised July 7, 1999 at the AFMS Annual Meeting

Shark Teeth•••



(c) 2000 Andrew Alden, licensed to About.com, Inc. ([fair use poli](#)

•••



Visit A Show in 2008 **FEB 22-24: Jackson, MS** - 49th Annual Gem, Mineral, Jewelry & Fossil Show and 58th Annual EFMLS Convention hosted by the Mississippi Gem & Mineral Society. Trade Mart Building, MS State Fairgrounds, Jackson, MS. **FEB 23-24: Albany, NY** - 15th Annual James Campbell Memorial Gem, Mineral & Fossil Show sponsored by the Capital District Mineral Club and NY State Academy of Mineralogy. New York State Museum, Empire Plaza, Albany, NY. **MARCH 1-2: Newark (Stanton), DE** - 45th Annual Earth Science Gem & Mineral Show sponsored by the Delaware Mineralogical Society. Delaware Technical & Community College, Churchmans Rd (Rt 58) (I-95, exit 4B), Newark (Stanton), DE. **MARCH 8-9: Clifton, NJ** - Annual Clifton Gem & Mineral Show Sponsored by the North Jersey Mineralogical Society. Pope John Paul II Elementary School, 775 Valley Road, Clifton, NJ located 220 yards north of the intersection of Route 3 & Route 46. Saturday 10-5 and Sunday 10-5. Contact Bob Horn (908) 813-0808 e-mail: Mineraldog@Comcast.net **MARCH 15-16: Gaithersburg, MD** - Annual Gem and Mineral Show sponsored by the Gem, Lapidary & Mineral Society of Montgomery Co., MD. Montgomery Co. Fairgrounds, Gaithersburg, MD. **MARCH 15-16: Hicksville, NY** - 36th Annual Gem, Mineral & Fossil Show sponsored by The Island Rockhounds. Holy Family School Auditorium, Hicksville, NY. **MARCH 28-30: Elkridge, MD** - Atlantic Micromounters Conference. MHA Conference Center, Elkridge, MD. Contact S. Weinberger <cscrystals2@verizon.net> for registration. (see page 3)

UPCOMING WCGM CLUB MEETINGS

DECEMBER 14, 2007 (Friday)

HOLIDAY AND WINTER BUFFET DINNER & PARTY / GATHERING

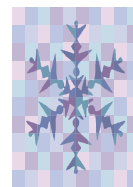
at the Newark Park Presbyterian Church! Dinner starts at 7pm.

Attendees, please bring a side dish to pass. WCGMC will provide basic beverages but bring your own favorite soda or cider if you want to. Roast beef & mashed potatoes / gravy cooked by famous Andrea Kords! Parents, please bring a gift for each of your *own* attending children.

Adults, please bring a gift (\$10 limit) for the same sex and an extra kids gift just in case.

GUEST SPEAKER-- VAN KING! Call Roxanne Rowe or Andrea Kords for info.

Drive carefully! Drive carefully!



CLUB NEWS TO DIG - KUDOS, TOO!

1. Do you need a special, unique gift to give to someone that already has everything? Check out the variety of one-in-a-million gift ideas that can be found at the American Hobby Shop, in the heart of Walworth, NY!! Tools, gems, rocks, mineral, fossils, books and lots more. The American Hobby Shop has been a silent benefactor and source of encouragement for our club for years!
2. KUDOS' to Ken and Roxanne Rowe who hosted the last officer's meeting at their house.
3. DUES ARE DUE! Contact Bill Lesniak, Treasurer, as soon as possible. See the information on the back cover of this newsletter for details.
4. "Diamond Dan" has publications for young people interested in gems & minerals!
Call: 585-289-4936.
5. **Plz: submit newsletter articles in writing BEFORE the 22nd of the month.**

Continued from page 2---

MARCH 29-30: Sayre, PA - 29th Annual Rock & Mineral Show sponsored by the Che-Hanna Rock & Mineral Club. Athens Twp. Volunteer Fire Hall, 211 Herrick Av; Sayre, PA **APRIL 26-27: Franklin, NJ** - 36th Annual New Jersey Earth Science Association Gem & Mineral Show sponsored by the Franklin-Ogdensburg Mineralogical Society, NJ Earth Science Assoc. & Sterling Hill Mining Museum. Franklin School/Washington Av; Franklin, NJ. **MAY 24: Towson, MD** - Chesapeake Gem & Mineral Show sponsored by the Chesapeake Gem & Mineral Society. NEW LOCATION: Ruhl Armory, 1035 York Rd (MD 45 just off I-695); Towson, Maryland.

HOPE TO SEE YOU ON THE ROAD!

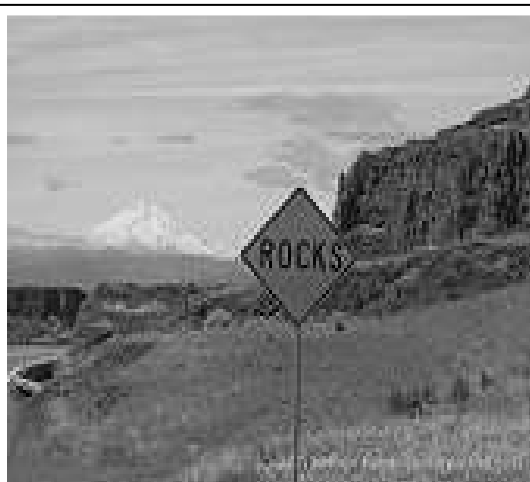


Figure 1 "ROCKS" by A. Alden about.com

Tri-Federation Rockhound Rendezvous and Field Trip May 21 - 26, 2008 Texas Springs, Nevada

The Northwest, Rocky Mountain and California Federations of Mineralogical Societies are hosting a Tri-Federation Rock hound Rendezvous and Field Trip to Texas Springs, NV, over Memorial Day Weekend 2008 and ALL AFMS members are invited. The Texas Springs area is well known for spectacular pink agate limb casts, as well as, other agate and petrified wood. Texas Springs Canyon is located approx. 25 miles SE of the town of Jackpot in NE Nevada. In addition to collecting trips we will have potluck dinners, happy hours, speakers, evening campfires, tailgate displays, map exchange, and a great rock hound get-together. The Texas Springs area is located about half way between Wells, NV and Twin Falls, ID, south of Jackpot, NV, and east of Hwy 93 near the California National Historic Trail. Camp: about 6 miles from Hwy 93 on Trout Creek. Roads are typical desert roads. OK for motor homes and trailers to campgrounds. This is a dry camping area: no services, no hook-ups. Set up camp Tues, May 20th. Try not to arrive before Wed, May 21st! Contact:
Dick Parks Northwest Fed.
360-892-3716

WAYNE COUNTY GEM AND MINERAL CLUB, INC.

MEETINGS: Held 2nd Friday night of each month at 7:30pm at Park Presbyterian Church basement, Maple Court, Newark, NY

WEBSITE: americanhobbyshop.com

ORGANIZED: 1973 **INC.** 1976
Affiliated with the AFML and EFMLS of Mineral Societies since 1973.

OFFICERS: Elected at the October meeting, taking office In November for a 2-year term.

FISCAL YEAR: Oct. 1st to Sept. 31st.

****NEW ANNUAL MEMBERSHIP CLASSES**

AND DUES (due Oct 1st):

\$10.00 JUNIOR or STUDENT

(18 yrs> with no parents in the club)

\$15.00 REGULAR or ONE SINGLE ADULT

(Over age of 18 years old)

\$20.00 FAMILY MEMBERSHIP

(Includes 2 adult votes and children)

Send due, SASE with your info to:

WCGMC, P.O. Box 4, Newark, NY14513

OBJECTIVE: TO STIMULATE INTEREST IN THE EARTH SCIENCES, IN COLLECTING AND CLASSIFICATION OF MINERALS, AND IN THE ART OF GEM CUTTING.

The public is welcome!!

You Might Be a Rockhound If

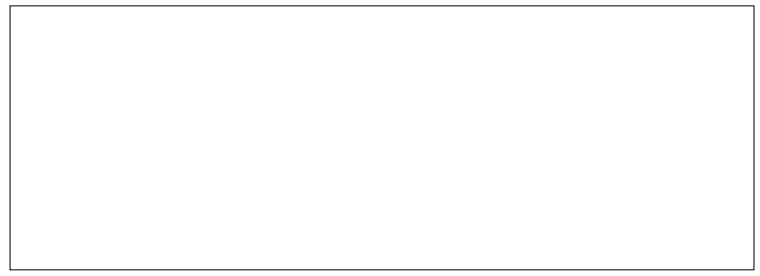
- .. You think road cuts are built as tourist attractions
- .. You describe your vacations by the rocks you brought home.
- .. The rockpile in your garage is over your head.
- .. Your PC screen saver features pictures of rocks.
- .. You find rocks when you empty your pockets at night.
- .. You went to a rock festival and you hate music.
- .. You gave rocks, tumblers, or rock tools for Christmas.
- .. When friends say they're going to Tucson, you assume it'll be in February.
- .. You can find Quartzsite on a map in less than 5 seconds.
- .. You can pronounce "molybdenite" correctly on the first try.
- .. The polished slab on your bola tie is six inches in diameter
- .. The bookshelves in your home hold more rocks than books; and the books that are there are about rocks.
- .. On a trip to Europe, you're the only member of the group who spends their time looking at cathedral walls through a pocket magnifier.
- .. You think you KNOW how to pronounce "chalcedony."
- .. The club you belong to uses rocks for center-pieces for the annual club Christmas dinner. (...and bring shovels for eating utensils! Rjwr)

WRITTEN BY MEMBERS OF THE GMEDITORS E-MAIL SWAP GROUP.
Contributors incl: Mel Albright, Richard Busch, Betty Commean, Dan Imel, Bob Keller, Paul Kline (www.amfed.org)



Stamp

Wayne County Gem and Mineral Club
Rebecca Remington-editor
David Kords- Past President/Advisor
C/O American Hobby Shop
P.O. Box 64
Walworth, NY 14568



First class: dated meetings and time valued.

