



**WAYNE COUNTY
GEM AND MINERAL CLUB
NEWS**
VOLUME 34 No. 8 august 2008



OFFICERS:

PRESIDENT:

Stan Griffin 315-462-3282

VICE PRESIDENT:

Jerold Donahue 315-548-8085

SECRETARY:

R Remington
beqster65@yahoo.com

TREASURER/

MEMBERSHIP CHAIR:

Bill Lesniak 315-483-8061

PROGRAM *:

Andrea Kords 315-926-1401

HOSPITALITY:

Pat Chapman 607-868-4649

FIELD TRIP CHAIR:

Bill Chapman 607-868-4649

DIRECTORS:

Ken and Roxanne Rowe
315-331-1438

Pat Chapman 607-868-4649

Terry Wilson 315-462-9222

PAST PRESIDENT:

Dave Kords 315-986-1171

EDITOR:

Rebecca Remington
315-926-1155

Mini-Miners:

Bill Chapman 607-868-4649

Stephanie Mason

585-265-9183

Heather Bornemann

Julie Zeller

President's Message

Hi, you active rock-hounds, you! Have you been telling people at the summertime picnics about our club? I have a challenge- who can get the most new members to join? See ya at our next meeting ---Your President, Stan



Cash and Treasures: The Show-

Watch 'Cash and Treasures' on The Travel Channel

Do you love the idea of striking it rich, but don't know where to look? On *The Best Places to Find Cash and Treasures* explore the riches that are all around us. Each week the new host Kirsten Gum takes viewers on an exciting, fun-filled journey to uncover lost relics, buried jewels and other valuable items — at real locations that are accessible to the public. In pursuit of each treasure, Kirsten brings viewers along as she turns up unexpected finds. How much are these treasures worth? Find out when certified appraisers price them in our final "Show Me the Money!" reveal. Kirsten Gum is the new face of "Cash and Treasures." The show, Kirsten and her guests will inspire the treasure hunter in you. So who is Kirsten Gum? Kirsten has quickly become one of the most recognized on-air personalities in sports commentating. She is versatile and charismatic, with a vivacious on-screen presence. But Kirsten is not just another pretty face -- even if she was voted the sexiest woman in Charlotte, N.C. twice. Her trip to the top has been a quick one. Kirsten began her broadcasting career at age 23 as a news reporter in Jefferson City, Missouri, and paid her dues in a number of markets as she sprinted through the ranks. Her ease in front of the camera comes from years of experience covering a wide range of world-class events: from NASCAR and the Tour de France to ESPN's Great Outdoor Games, the PBR World Championships, World Cup Skiing and the grueling three-week off-road race through Africa -- the Dakar Rally. An Alaskan native currently living in Los Angeles, Kirsten is hardly a spectator. In October 2005, she completed the "Beast of the East," a 400-mile adventure race in Virginia. Racing on just 10 hours of sleep during the five-day event, Kirsten and her team fought their way to a strong second-place finish. Don't pigeonhole her as a tomboy, though. She is equally at home in Lycra or a little black dress. Kirsten is passionate about sports, but her enthusiasm extends to travel and a wide range of experiences. When she's not searching for cash and treasures, Kirsten can be found hiking, cycling, snowboarding, scuba diving, kayaking, horseback riding or surfing. (<http://cash-and-treasures-wiki.travelchannel.com>)

The Gem & Mineral Society of Syracuse is
having an Educational Bus Trip!

GMSS members, family friends and non-members welcome!

Tuscon of the EAST!

East Coast Gem, Mineral, and Fossil Show

West Springfield, Massachusetts * www.mzexpos.com/eastcoast.htm

Check this* website for list of vendors, speaker days and times, etc.



- **Speakers:** Bob Jones of *Rock and Gem Magazine*, Nancy Millard, Kevin Downey, and Gail Spann
- **Featured Exhibitors:** Herb & Monika Obodda
- **200 dealers** from all over the U.S. and abroad, offering a variety of items related to earth sciences.
- **Door prizes, guest speakers, museum quality mineral and fossil exhibits**
- **Gazillions of beads!**
- **Air-conditioned hall.**
- **Largest wholesale section in the East!** (bring your tax ID cert.)

When: Saturday August 9 3 hours 45 mins. (not including rest stops on the way)

6:30 am sharp Leave Shopping Town Mall Erie Blvd. Syracuse behind theater area (old Bon-Ton building) Stop for coffee on Thruway near Albany. Arrive West Springfield around **11:00am**.

5:30 pm. Leave Springfield

Stop for dinner (to be determined) and return to Syracuse around **11:30 pm**

Bring your own snack for the bus.

Cost: Cost of bus = \$2000+ (up considerably from last year!) You will save \$11 extra by going on this club sponsored trip - **\$6** Admission for GMSS bus trip *waived!* Cost to park **\$5** per car *waived for GMSS bus trip.*

\$\$\$ GMSS members who worked at our July 2008 show **ONLY \$25** All others - **\$50.** **Bring your tax ID card if you have one!**

Deadline August 1 to Send check made out to **GMSS** for \$50* (or \$25 for GMSS workers) to:

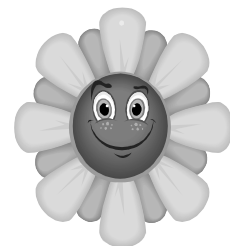
Cathy Patterson
7725 Van Buren Road
Baldwinsville, New York 13027

You must contact within 24 hrs of trip if canceling. No shows = No refund

Contact Cathy Patterson - 638-8817 cp@gmss.us

UPCOMING WCGM CLUB MEETINGS

AUGUST 8, 2007 (Friday) NO MEETING



SEPT 12, 2007 (Friday) Park Presbyterian Church, Newark

Board meeting at 7pm. Regular meeting at 7:30pm

Mini-Miners meeting at 7:30pm.

_____ refreshments --- _____ door prize

CLUB NEWS TO dig - Kudos, too!

1. There will be a review coming up of the revised By-Laws for the election of officers this fall.
2. Bill Lesniak reports that the EFTA Website is up & running with this year's field trips. www.efta.biz
4. **Plz: submit newsletter articles in writing BEFORE the 22nd of the month.**
5. MOTOR HOME for sale. Call Stan for info. 315-462-3282.
6. Are you getting these newsletters? Please contact the editor if not.

Right to prospect for gold

Our friend Jim Simons asked if we would pass this information along. We thought some of you might wish to add your names to the voices calling out to Albany. Pat & Bill Chapman

I have Started a online Petition to get the laws changed in NYS. There has been a Bill Drafted to # 8023. This will give NYer's the Right to prospect for gold or silver and to keep it.

The State of NY owns any mineral or gems or fossils all belong to the State this is a law that is called the Kings law that goes back to 1775. It is time for the change and this Bill will give us the right to any mineral we find and collect. So please follow the link and sign the petition to help us. Jim

Simons

<http://www.petitionspot.com/petitions/BILL8023>

Hello all!

The GMSS extends a warm invitation to all the RLS and Mineral Section, and all Wayne County Gem & Mineral Club members to go on our bus trip to the East Coast Gem, Mineral Fossil Show Saturday August 9. Would you please pass the word around via email to all your members? We'd love to have you join us. It will be along but fun day and you can't beat the price!

Cathy Patterson
Gem & Mineral Society of
Syracuse, Inc.
315-638-8817

Galena- an interesting mineral!

Galena is the natural mineral form of lead sulfide. It is the most important lead ore mineral. Galena is one of the most abundant and widely distributed sulfide minerals. It crystallizes in the cubic crystal system often showing octahedral forms. It is often associated with the minerals sphalerite, calcite and fluorite. Galena deposits often contain significant amounts of silver as included silver sulfide mineral phases or as limited solid solution within the galena structure. These argentiferous galenas have long been the most important ore of silver in mining. In addition zinc, cadmium, antimony, arsenic and bismuth also occur in variable amounts in lead ores. Selenium substitutes for sulfur in the structure constituting a solid solution series. The lead telluride mineral altaite has the same crystal structure as galena. Within the weathering or oxidation zone galena alters to anglesite (lead sulfate) or cerussite (lead carbonate). Galena exposed to acid mine drainage can be oxidized to anglesite by naturally occurring bacteria and archaea, in a process similar to bioleaching. (see next pg)

WAYNE COUNTY GEM AND MINERAL CLUB, INC.

MEETINGS: Held 2nd Friday night of each month at 7:30pm at Park Presbyterian Church basement, Maple Court, Newark, NY

WEBSITE: www.wcgm.org

ORGANIZED: 1973 **INC.** 1976
Affiliated with the AFML and EFMLS of Mineral Societies since 1973.

OFFICERS: Elected at the October meeting, taking office in November for a 2-year term.

FISCAL YEAR: Oct. 1st to Sept. 31st.

****NEW ANNUAL MEMBERSHIP CLASSES**

AND DUES (due Oct 1st):

- \$10.00 JUNIOR or STUDENT
(18 yrs > with no parents in the club)
 - \$15.00 REGULAR or ONE SINGLE ADULT
(Over age of 18 years old)
 - \$20.00 FAMILY MEMBERSHIP
(Includes 2 adult votes and children)
- Send due, SASE with your info to:
WCGMC, P.O. Box 4, Newark, NY 14513

OBJECTIVE: TO STIMULATE INTEREST IN THE EARTH SCIENCES, IN COLLECTING AND CLASSIFICATION OF MINERALS, AND IN THE ART OF GEM CUTTING.

The public is welcome!!

Galena- an interesting mineral! (continued) Galena deposits are found in Wales, Germany, France, Romania, Austria, Belgium, Italy, Gorno northern Italy, Spain, Scotland, England, Australia, and Mexico. Noted deposits include those at Freiberg, Saxony; Cornwall, Derbyshire, and Cumberland, England; the Sullivan Mine of British Columbia; and Broken Hill, Australia. Galena also occurs at Mount Hermon in Northern Israel. In the USA, it occurs most notably in the Mississippi Valley type deposits of the Lead Belt in southeastern Missouri, and in similar environments in Illinois, Iowa and Wisconsin. Galena also was a major mineral of the zinc-lead mines of the tri-state district around Joplin in southwestern Missouri and the adjoining areas of Kansas and Oklahoma. Galena is also an important ore mineral in the silver mining regions of Colorado, Idaho, Utah and Montana. Of the latter, the Coeur d'Alene district of northern Idaho was most prominent. Galena is the official state mineral of the US states: Missouri and Wisconsin. One early use of galena was as kohl, which in Ancient Egypt, was applied around the eyes to reduce the glare of the desert sun and repelling flies, a potential source of disease. Galena is a semiconductor with a small bandgap about 0.4 eV which found use in early wireless communication systems. It was used as the crystal in crystal radio sets, in which it was used as a point-contact diode to detect the radio signals. The galena crystal was used with a safety pin or similar sharp wire, which was known as a "cat's whisker". Making such wireless sets was a popular home hobby in Northern England during the 1930s. (<http://en.wikipedia.org/wiki/Galena>)



Stamp

Wayne County Gem and Mineral Club
Rebecca Remington-editor
C/o WCGMC
P.O. Box 4
Newark, New York 14513



First class: dated meetings and time valued.