



**WAYNE COUNTY
GEM AND MINERAL CLUB
NEWS**
volume 39 NUMBER 7 July 2011



**2010-2011
OFFICERS**

**PRESIDENT/
Editor**

*Pat Chapman
607-868-4649*

batnpill@empacc.net

VICE PRESIDENT

*Glenn Weiler
315-594-8478*

SECRETARY

*Eva Weiler
315-594-8478*

**TREASURER/
MEMBERSHIP CHAIR**

*Bill Lesniak
315-483-8061*

FIELD TRIP CHAIR

*/Mini-Miners
Bill Chapman
607-868-4649*

DIRECTORS

*Jerold Donahue
585-548-3200*

*Ken and Rocky Rowe
315-331-1438*

*Terry Wilson
315-462-9222*

Upcoming Events for July

July 6-10: Syracuse, NY

EFMLS/AFMS Convention & Syracuse Club Show NYS Fairgrounds
AFMS meetings July 7-8; EFMLS Annual Meeting July 8; Show: July 9 -10

July 8 Friday We'll set up our merchandise & displays for Syracuse Show

July 9-10 Syracuse Show Sat. 10-5 Sun. 10-5

Free entrance to the show in exchange for a couple of hours at our booth. Sell some of your extra stuff. Call Pat at 607-868-4649 for info & sign up.

July 21-26 WCGMC Field Trip to Bancroft, Ontario Canada

Details on Pg. 5 Contact Dave Millis at 570-553-2302 for further information & sign up.

July 31 WCGMC Field Trip - Flint Creek 1 PM Local fossils can be found in a wet, sloping area. Bring normal fossil collecting tools & PPE [Personal Protective Equip.]. Bug protection, snack & drink recommended. Call Terry Wilson at 315-462-9222 for info & sign up.

Advice From Our Elders – From Master Blacksmith to Ken Rowe

To Harden Steel- Heat until it loses its magnetism, quench in oil & swirl around.

To Temper Steel- Clean to brightness, then heat 2-3 inches back on the handle. Watch the color as it approaches the end. When straw-colored at end, quench in oil & swirl. Grinding point no hotter than you can touch.

President's Message



Greetings Fellow Rockhounds,

July looks to be a busy month for the club. Digs, shows, national and regional conventions and the list goes on.

The American Federation of Mineralogical Societies [AFMS] AND the Eastern Federation of Mineral & Lapidary Societies [EFMLS] are meeting in Syracuse this month which means folks from all over the country are coming **HERE**. If you're into creative and low impact collecting like I am, this is your chance. Sign up to work a couple of hours at the club table and get into the show free. Bring your locally collected items from Alden, Cameron and all points in between to sell on the club tables. People are always looking to purchase locally collected materials. In return, you can collect that picture jasper that jumps out at you and anything else that's brought through those doors. Who knows what you'll find.

Meet the folks who put together programs for us from insurance to policy making to library and program archives. Let them know how they're doing. Want something? This is the time to let it be known.

Did I forget to say we're going to have fun? I majored in fun & games in college so I'm a professional on this. Good times are to be had before, during and after the show with friends new & old.

Convention activities start on Wed. so try my cell at 585-269-8085 if you need to reach me. Hope you can make it and meet new folks& collect specimens from all over!

Pat

For Convention & show info

http://www.amfed.org/show/2011/1_GeneralInfo.pdf

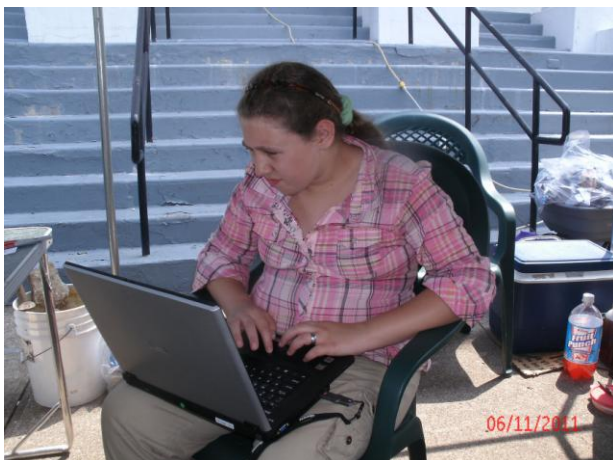


Ken earns a well deserved rest.

NEWARKFEST 2011



Bill & friends work the sluice.



Alexis excels at PowerPoint for WCGMC!

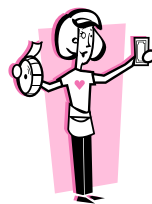
JUNE MINUTES IN a MINUTE

We met.
We set up the tent.
We ate.
We enjoyed Kim Pandina's
Jewelry Demo and displays.



Kim, of Panda Wear, www.pandajewels.com

We talked about Newarkfest.
We went home.



Trilobite Tail Raffle

\$3.00 a ticket 2 for \$5.00

To benefit the Wayne County Gem & Mineral Club

Ticket Sales start June 10th and end July 10th.
Drawing held at the Syracuse Show at 3 PM.
See Board Members for tickets.
Many thanks to Kent Smith for this donation!



What does \$1,000 in gold look like?

<http://money.msn.com/investment-advice/what-does-1k-in-gold-look-like-minyanville.aspx?cp-documentid=6820188>1=33036> 5-24-11

The frenzy behind skyrocketing gold prices has people rooting through jewelry boxes for gold to sell. It doesn't take much of the precious metal to generate serious cash.

By [Justin Rohrlich](#), [Minyanville](#)



Gold wafer

With an ounce of gold fetching \$1,500, sellers are coming out of the woodwork, says Jose Caba of US Gold Buyers, a national gold buyer and refiner in New York.

The first to capitalize on rising prices, Caba says, were the investors -- people with gold bars, ingots or coins to cash in. "The second group," he adds, "is the rest of America . . . selling dental gold, class rings, broken jewelry, that sort of thing."

We asked Caba to show us what \$1,000 worth of gold looks like. He produced several examples, including a gold wafer. Of course, \$1,000 would get you less than two-thirds of a 1-ounce gold bar or wafer.

Gold, as in the single-ounce Pamp Suisse 24-karat ingot pictured above, is measured in troy ounces, after Troyes, France, where the unit of measurement -- roughly 10% heavier than a standard, or avoirdupois, ounce -- was first used.

Gold wafers can be purchased over the counter from merchants such as **ATS Bullion**, a dealer operating from the lobby of London's Savoy Hotel.

Rockhounding in Bancroft 2011

“Bancroft is regarded as the "Mineral Capital of Canada" because of the variety and quality of mineral species that occur here. The region lies on top of a portion of the Canadian Shield stretching 400 kilometers wide by 2,000 kilometers long from Lake Huron to Labrador on rock that has been estimated at between 1.1 and 1.8 billion years old. Mineral deposits characteristic of the Bancroft region are of excellent quality, but the veins were small and often difficult to follow. As a result, most of the mining activities which commenced around the 1880's, were limited to smaller mines and quarries, ceased because they could not compete with larger producers across Canada and the United States. After World War II, the search for uranium initiated another mining boom in the Bancroft area. In addition to uranium, 1,600 species of minerals have been identified in this region. Other commodities that were central to mining efforts at the turn of the century were corundum, feldspar, nepheline, graphite, talc, quartz, radium, fluorite, gold, iron, lead, barite, apatite, mica, beryl, molybdenum, sodalite and marble.”

Compliments of the Bancroft Chamber of Commerce

- 7/21 Thurs.** Travel Day . Set up. Collect small zircons, moonstones, fluorescent rocks & Hackmanite.
7/22 Fri. Bear Lake - Collect large green apatite crystals and mica, feldspar XLs & titanite XLS
7/23 Sat. Marmora Quarry – Large quarry where we can collect numerous specimens... garnet XLs, pyrite, magnetite, Unakite.
Leave at 7:30 AM
PPE required: Hard hat, Safety vest safety glasses, shoes and gloves.
7/24 Sun. Rock & Mineral Show in Bancroft - close roadcut for apatite, massive calcite, diopside XLS
7/25 Mon. Craigmont Mine near Cumbermere – one of three mines that have sapphires in crystal shapes. Burgess mine or Logan mine. It's sapphire Monday and we're looking until we find them.

General Info:

Most dig locations don't have facilities & we'll need to pack lunch. Meals are usually spent together family style. Call Pat and let her know what you can contribute to the meal plan.

We leave for the day's dig at 8 AM usually. On Sat., we leave at 7:30.

Border - Take Note* You'll need an enhanced license or a passport to get back into the U.S.

Fire water, fire sticks, firearms, fireworks & fire crackers will cause problems at the border. Learn the rules and regulations before attempting to cross with any of these. Pets need proof of current vaccinations.

Bring tools you're comfortable using. There are hardware and farm stores in the Bancroft area.

There are many locations in this area to collect. The rocks and minerals in this target-rich zone are 1 to 1.3 billion years old. Seems like you can leave the fossils books home. Impressions and fossil remains are missing here.

LODGING: WCGMC is camping at the Bancroft Campground. Call 613-332-3673 to make a reservation. Mention you're with Dave Millis to get a price break & a site near our group. Camping not your thing? There's a Best Western at 146 Hastings St. North in Bancroft. Book online at [Best Western® Official](#) or call customer service line at 1-800-359-6279 and speak to a live customer service agent 24 hours a day, 7 days a week.

Contact Dave Millis at 570-553-2302 for further information & sign up. Treat yourself to a little fun this summer. Come and experience a little of rockhound heaven.

Wayne County Gem & Mineral Club, Inc.

Meetings held 2nd Friday of each month
Mini-Miner Program at 6:30 P.M.
Regular Program & meeting at 7:00 P.M. at
Park Presbyterian Church
Maple Court, Newark, NY 14513

WEBSITE: www.wcgmc.org

Organized: 1973 Incorporated: 1976
Objective: To stimulate interest in earth sciences,
collecting, classification of minerals, & in the art of
gem cutting.

Fiscal Year: Oct. 1st to Sept. 30th

Dues: Due Oct. 1st.

Juniors or students [18 yr.> w/o parent in club] \$10.00
Single Adult [over 18 years old] \$15.00

Family Membership [includes 2 adult votes & kids] \$20.00

Send dues to WCGMC

PO Box 4, Newark, NY 14513

Affiliated with the American Federation of
Mineralogical Societies [A.F.M.S.]

www.amfed.org The Eastern Federation of

Mineralogical

& Lapidary Societies [EFMLS] www.amfed.org/efmls

The Eastern Field Trip Alliance [E.F.T.A.] www.efta.biz

WCGMC - Always looking For New Places to Dig!

UPCOMING EVENTS

July 2011 See Page 1

August 2011 – picnic at Linda's - no meeting

6-7 Sat & Sun Waterville, ME 41st Annual Mid-State Gem & Mineral Show Water-Oak Gem and Mineral Society (ME) Mount Merici School, 152 Western Ave., Contact: Ellery Borow @ 207-547-3154

10-13 Wed – Sat Canandaigua NY - Visit the Pageant of Steam where Bill runs the sluice, Jerry has everything under the sun and some of our members are offering jewelry, specimens and fellowship.

<http://www.pageantofsteam.org/index.php>

16 Tues. WCGMC Dig – Alden Meet at Dollar General Parking Lot in Alden at 9 AM. Collect pyrite and pyritized fossils. Contact Bill Chapman at 607-868-4649 for sign up and info.

21 Sun – Savannah - club picnic at Linda Schmidtgal's house.

We're invited to break bread & checkout Linda's newly organized garden rock collection. Location: 1237 Wiley Rd. Savannah. Please bring a dish to pass and RSVP to Linda at 315-365-2448 or e-mail her at lees@tds.net so we know how many to plan for. Thanks!

27 Sat. EFTA Dig - Power's Farm: during the St. Lawrence County Mineral's Club's 45th Annual Show in Madrid, NY. Meet at the Madrid Community Center, State Hwy. 345, leaving the show site at 9:00. For more information, please contact William deLorraine, 315-287-4652 or wdellie@verizon.net. Show info:

<http://www.stlawrencecountymineralclub.org/>

27-28: Concord, NH - Capital Mineral Club 48th Annual Gem & Mineral Festival. Everett Arena, 15 Loudon Rd, Concord, NH. Sat 9:00AM-5:00PM and Sun 10:00AM-4:00PM. Adult admission \$5 children under 12 are free when accompanied by an adult. website www.capitalmineralclub.org

First Class Dated Meetings & Time Valued

The Public is Always Welcome



Wayne County Gem and Mineral Club
P.O. Box 4
Newark, New York 14513