

# Wayne County Gem and Mineral Club News

March, 2020

Always Looking for Places to Dig!



WCGMC Winter Auction – February 14, 2020

Ed

There is a bid  
from the back !



<http://www.wcgmc.org>  
**FACEBOOK link**



Crinoids and more  
March Meeting

## Next Club Meeting March 13<sup>th</sup>

Program: **Echinoderms—  
Extinct and Modern Animals**  
*by Stephen Mayer*

Come learn about crinoids, starfish, sea urchins and more about a very unique phylum of invertebrate marine animals.

for more, see Abstract on Page 3

**Please note:** The church is using the basement for its annual sale and we will meet in the lobby upstairs in March.

## Next WCGMC Workshop March 21<sup>st</sup>

When: 10:00 AM until mid-afternoon

Where: The Weiler's Barn /Club Workshop  
6676 E. Port Bay Rd, Wolcott, NY

Rules: Bring your own rocks.  
Training on equipment is available.  
Eye protection is required.  
\$5/adult to offset maintenance costs.

## Special Event at the March meeting

We have traded a "box of rocks" that our club members collected for a similar box from the **Copper Country Rock and Mineral Club** of northern Michigan. We sent them minerals from New York, New England, Ontario and other places that WCGMC has ventured in recent years.

In return, CCRMC sent us a selection of copper country rocks. Many contain copper, some are mineral specimens, others are polished. The yellow arrow points to a slab of "yooperlite", sodalite-bearing syenite that fluoresces yellow under Long Wave black light.



Our plan is to raffle the 30-35 specimens to members present at our March meeting. But with a bit of a catch. Bring a mineral or two that you have collected or obtained to give to the club towards a trade with another club and your tickets will be part of the first raffle. Others will get a selection, but only after all those who have contributed to our next trade get their preferred piece of Michigan.

## President's Message

Linda Schmidt Gall



We found out how hardy WCGMC members are on Valentine's Day. Temperatures in the low teens did not prevent a huge turnout for our annual winter auction. All day I worried if folks would stay home. I need not have worried.

That said, a huge thank you goes out to all who participated. The club raised over \$2000 from the four separate auction events. In addition to the spirited bidding, we were blessed by numerous donations from members. Of the donations, Ed's faceted stones may have helped us the most, but everything that was contributed was much appreciated.

We have been considering a new water-based saw for the workshop. Now we have the funds to make that a reality.. We will also fund a portion of club field trip site fees as we did last year and find other ways to build the club with the funds from the auction. I sincerely hope everyone enjoyed the event and was happy with the minerals they took home.



The oil saw on the right was added to the workshop with funds from the October bulk rock sale. Come try it out on March 21st. The single water based saw on the other side of the room is lonely. Should we get him/her a partner?

At our March meeting we will truly learn how well we like each other. The church is holding its annual basement sale and the area we typically use is not available. We've been fine in the upstairs lobby area in past years and we will be again, but that area is smaller this year due to construction and we are larger. Come prepared to meet your fellow members face to face!

We have a double program this month with a fossil presentation by Stephen Mayer (see page 3) and a raffle from a trade with another club (see page 1). It should be another fun meeting.

*Linda*

## WCGMC Monthly Contest

Don't forget: Somewhere in this newsletter you will find a statement that reads **"The special mineral/fossil for March is xxxxx"**. Find that statement, remember the mineral or fossil listed, and come prepared to enter a raffle at the March meeting to win a fine prize. Don't share the code word or your chances to win will be reduced!

### Can you name this mineral ?

- I am a sulfide mineral.
- I am really soft (hardness =2).
- My crystals are orthorhombic.
- I display metallic luster.
- I'm found in China, also Mexico, Romania, Japan, Peru, and a little in California/ Nevada.
- My streak is dark gray.
- think antimony ore
- I am the March mineral of the month.



*see page 3 for answer*



## Echinoderms

### WCGMC March Meeting Program

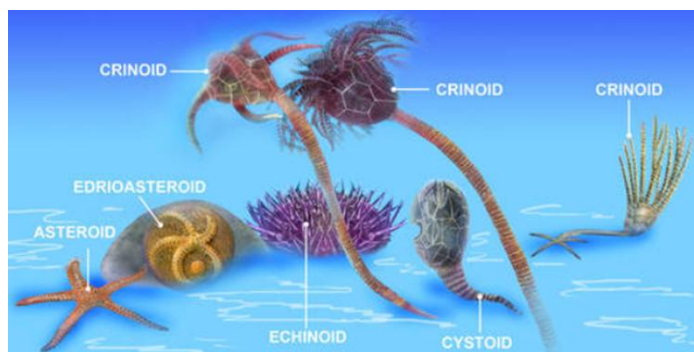


#### Abstract by Stephen Mayer

Echinodermata comprise one of the eleven phyla of the kingdom Animalia. Ancestral forms first appeared during the Early Cambrian and diversified through millions of years of evolution. They occupied all marine environments and scientists recognize approximately 13,000 extinct species as well as 7,000 species living today. The phylum can be further subdivided into another 11 major classes and subclasses<sup>1</sup> which include the Eocrinoidea, Paracrinoidea, Carpoidea, Echinoidea, Asteroidea, Ophiuroidea, Edrioasteroidea, Cystoidea, Blastoidea, Crinoidea and Holothuroidea. Each share similar characteristics that separates this phylum from other clades.

In the March program, an overview will be given of each class, examining not only some of these traits but also peculiarities of these fascinating fossils as well as living echinoderms. Moreover, specimens will be profiled with locality information to permit collecting with actual fossils on display.

<sup>1</sup>Wikipedia and other internet sources define different number of phyla and classes.



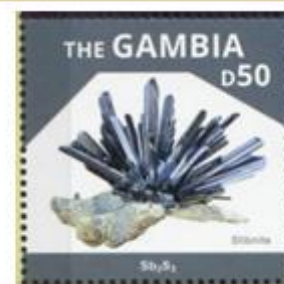
**WEATHER:** Yes, it is that time of year. An e-mail note will be distributed if a Friday meeting must be cancelled (or check Facebook). Or call Bill Lesniak (315-483-8061), Fred Haynes (585-203-1733), or Linda Schmidtgal (315-365-2448).

The Buffalo Geological Society, Inc.  
52<sup>ND</sup> ANNUAL  
**Gem Mineral Fossil Show**  
Meet us at "The Fairgrounds"  
Sat, March 21, 2020 • 10am-6pm  
Sun, March 22, 2020 • 10am-5pm  
In the Market, Grange, and  
NYS Police Buildings located on  
the Fairgrounds in Hamburg, NY  
1 DAY ADMISSION \$6 PER PERSON  
2 DAY ADMISSION \$9 PER PERSON  
**FOSSILS**

**51st ANNUAL  
GEM & MINERAL SHOW**  
Presented by  
**Che-Hanna Rock & Mineral Club, Inc.**  
A (501c3) not-for-profit organization  
MAR. 28, 2020 9 a.m. – 5 p.m.  
MAR. 29, 2020 10 a.m. – 4 p.m.  
**\*\* GREAT LOCATION \*\***  
**WYSOX VOL. FIRE CO. SOCIAL HALL**  
**111 LAKE ROAD, WYSOX, PA**  
OUTSTANDING GEOLOGICAL EXHIBITS  
PRESENTED BY  
**Susquehanna River Archaeological Center**  
and  
**FLUORESCENT MINERAL PROGRAMS BY UV-BOB**  
Saturday--11am--1pm--3pm  
Sunday--12 noon--2pm  
Admission: Adults \$3.00 \* Students \$1.00 \* Under 8 Free

I am Stibnite  
 $Sb_2S_3$

answer from page 2



## The WCGMC Sand Page

## The Sands of Guam by Fred Haynes



This winter I have been an active sand trader, acquiring sand from around the world in exchange for some I collected on our club trips last summer. I could fill a book with stories and pictures of these sands and their locations. However, for now I have selected one location and two sands to highlight. But first, a little history and a bit of geology.

The South Pacific island of Guam played a key role during World War II. The strategically located island was occupied by Japan shortly after Pearl Harbor. The island became a valuable naval and air force post for Japan for 31 months until a 3-week battle in the summer of 1944 when the United States recaptured control of the small island. After the war, Guam became an unincorporated US territory. Today, its 160,000 inhabitants are US citizens.

Geologically, Guam is the southernmost of a volcanic chain of islands called the Marianas. These isolated islands were created by the complicated interaction of three oceanic tectonic plates. The islands ride on the small Mariana plate which is caught between the very large Pacific Plate on the east and the Philippine plate on the west.



Guam is ~1500 miles south of Tokyo, Japan.  
modified from Wikipedia Commons

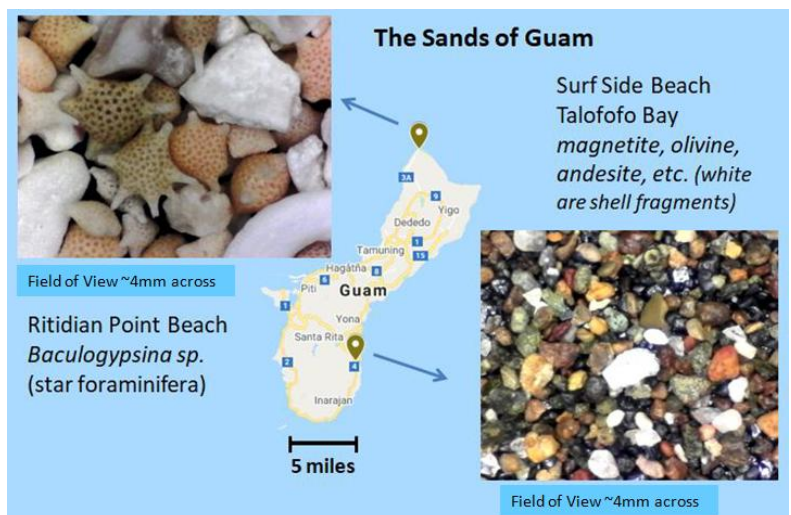
The Pacific plate is being subducted under the Mariana plate forming the Mariana Trench, the deepest subsea location in the world. At its deepest, just 120 miles southeast of Guam, the trench is over 36,000' feet deep. If Mt. Everest were placed into the trench, its peak would still be over a mile under water. Because of its proximity to plate margins Guam does experience earthquakes, but the volcanoes on the island are no longer active.

Guam is in the tropics and as a result coral reefs surround most of the island and the beaches have become popular tourist destinations, particularly of Japanese, South Koreans, and Americans. And, as I learned this winter, Guam's beaches are home to some really interesting and exotic sand. I acquired two such sands in a trade with a collector from Massachusetts, Leo Kenney. For an island of only 200 square miles, the beaches vary significantly.

Surf Side beach on the southeast side consists mostly of volcanic rock fragments (andesite and dacite) and magnetite and olivine mineral grains. Overall it is generally black, but magnification shows a very colorful mix of altered volcanic rock and mineral grains.

In contrast, the beaches along the northern portion of the island are white to light tan and consist of fragmented coral and the shells of lots and lots of tiny single-celled animals called foraminifera (forams for short). The dominant species at this site is *Baculogypsina sphaerulata*, also known as star forams for obvious reasons when you look at the picture below or the 1-2mm shells in the title box.

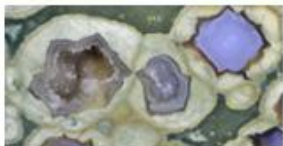
Just more proof that no two sands are alike.





## Rain Forest Jasper

by Fred Haynes



Each month at the Saturday club workshop our President (who doubles as our Collection Curator) brings along something from the club collection to raffle off to all who attend the workshop. This month she arrived with a superb spread of unpolished slabs of Rain Forest Jasper, a very specific form of jasper from the Mt. Hay volcanic field in central Queensland, Australia.



**The selection of Rain Forest Jasper at the workshop raffle.** I picked out the one with the yellow arrow with about the 10<sup>th</sup> pick.

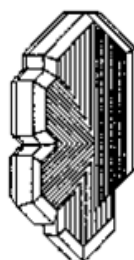
Jasper is an opaque variety of chalcedony, often multi-colored and with unique patterns, that is commonly associated with continental, silica-rich, volcanic rock. The wonderful patterns develop as the lava continues to slowly flow while consolidating into hardened rock. Geologists refer to rocks like Rain Forest Jasper as spherulitic rhyolite: rhyolite based on its composition which is similar to granite, and spherulitic due to the gas bubbles that were trapped during formation and later filled by agate, clear chalcedony and sometimes quartz. The green color in Rain Forest Jasper is unique as most jasper is red, colored by iron trapped during crystallization.

The spherulites in Rain Forest Jasper typically shrunk from the inside while the lava was cooling leaving complex polygonal cavities in the center. These cavities were later filled by colorful chalcedony when low temperature hydrothermal fluids invaded after the rock had lithified (see photo in the title box, which is from [Mindat entry on Mt. Hay](#)). When these agatized spherulites weather from the rhyolite they are termed “thunder eggs”.

The jaspers of the Mt. Hay volcanics have been dated to be 120 million years old, a time when Cretaceous-aged dinosaurs like Allosaurus and Ankylosaurus roamed the Australian continent. Hopefully they all stayed away from the viscous lava flows in eastern Australia.



**Bill Lesniak had the first draw.** He spent about an hour inspecting them all before making his selection.



## 47<sup>th</sup> Rochester Mineralogical Symposium April 23-26, 2018

**Radisson Hotel Rochester Airport  
175 Jefferson Road, Rochester, NY**

This four-day event in Rochester is truly an international event with attendees and speakers from multiple continents converging in western New York. Mineral collectors, dealers, exhibitors, and researchers convene for technical sessions by day, and “shopping”/storytelling by night. A full floor of the Radisson is dedicated to mineral dealers swapping and selling minerals. Book dealers, a micromount room, dozens of exhibits, and a great Saturday afternoon silent auction share the main floor with almost three full days of technical talks. Most who have attended try to go back. If you have not yet attended and you have an interest in learning more about the minerals and rocks you love, this local symposium might be for you. The full symposium schedule is available online. The fee for the full symposium is \$120, but single day admission is also available.

To learn more, visit:

<https://www.facebook.com/RochesterSymposium/>



## February 15<sup>th</sup> -- It was mighty cold outside, but plenty warm inside



Our new saws look great open also.  
Jeff Wilkins for scale.



Darn, someone  
photo-bombed  
this picture.  
Sorry.



Ilion travertine



so is this ..  
the stone  
I mean

It's quartzite, it's blue, but we  
don't know where it is from



A big apatite



## Wayne County Gem and Mineral Club Schedule

*last update Feb. 25*

Spring is coming and it is time to think about field trips. We will continue with monthly meetings and workshops through June and we will sprinkle in some day trips throughout the spring, but this year the club is going to need some help from others to plan our typical slate of longer trips. We have a big 2-week adventure planned in September (see below) and we hope to get back to New England (probably Maine) in the summer, but we had to scrap one big trip until at least next year.

We had hoped to leave the planet some time this summer in search of platinum group elements and associated minerals within the asteroid belt. Everything was going fine with building and planning in our Wolcott laboratory. Glenn, "*he can build anything*," Weiler was busy designing transportation and our wonderfully productive auction provided the resources to purchase all the required material to refit the Weilermobile for the trip. BUT, just as all seemed to be ready, we hit a snag.

The shielding that would need to be added to protect the exterior of the Weilermobile (and those within it) requires a rare mix of noble and rare-earth elements that are only available from China. We have just learned that the outbreak of the coronavirus is going to significantly delay our supplies from shipping the required metals. It seems there is no recourse but to postpone our trip until 2021. On the plus side this is going to give us additional time to research which asteroids we might want to visit.



**All simulation runs for the trip went perfectly. If we could have obtained the required rare-earth metals and alloys, we could have been on our way in July.**

However, it does leave us open dates on our collecting calendar, mostly in mid-summer, after GemFest and before a picnic date which will likely be set in mid-August again. We are looking for a member (or two) to step forward and plan a trip (or two) during this period. We realize that whatever is planned may not be as adventurous or rewarding as a trip to the asteroid belt, but those who have been leading trips these past few years would greatly appreciate the help. Last summer James Keeler stepped forward to plan a wonderful trip to five pegmatite quarries in Maine. Who will it be this year?

March 13<sup>th</sup> – Program: **Echinoderms - Extinct and Modern Animals** by Stephen Mayer (pg. 3)  
Raffle of specimens received in trade from CCRMC (page 1)

March 21<sup>st</sup> – March workshop

**April 1<sup>st</sup> - Ace of Diamonds Opening Day** (*A Rite of Passage for WCGMC*)

April and May workshop dates are not yet set.

April 10<sup>th</sup> and May 8<sup>th</sup> meeting programs are not yet determined.

May weekend day: We will find a day to visit Ilion. Other local trips likely too.

**JUNE 6-7: GemFest in Canandaigua (June 5<sup>th</sup> is set-up day). Can you help us?**

July or early August - New England trip (probably Maine)

An August Saturday – PICNIC TIME (date should be set soon)

September 12<sup>th</sup>- September 26<sup>th</sup> – Two week trip around Lake Superior. Ask us.

## Wayne County Gem & Mineral Contacts

### ELECTED OFFICERS

President - Linda Schmidtgal  
[lees@tds.net](mailto:lees@tds.net) 315-365-2448  
 Vice-President - Fred Haynes  
[fredmhaynes55@gmail.com](mailto:fredmhaynes55@gmail.com) 585-203-1733  
 Secretary - Debbie Breeze  
[debbiegb55@hotmail.com](mailto:debbiegb55@hotmail.com) 585-289-6989  
 Treasurer - Bill Lesniak  
[Dirtman300@aol.com](mailto:Dirtman300@aol.com) 315-483-8061

### Board of Directors

Gary Thomas [gftthomas956@gmail.com](mailto:gftthomas956@gmail.com)  
 Bob Linderbery [bootmanblues@gmail.com](mailto:bootmanblues@gmail.com)  
 Heidi Morgenstern [morgensternheidi@rocketmail.com](mailto:morgensternheidi@rocketmail.com)  
 James Keeler [james@jkeeler.com](mailto:james@jkeeler.com)

Past President - Glenn Weiler [gwexterior@gmail.com](mailto:gwexterior@gmail.com)

Visit us on Facebook:

<https://www.facebook.com/groups/1675855046010058/>

### APPOINTED POSITIONS

Bill Chapman – Field Trip Chair  
[batnpill@empacc.net](mailto:batnpill@empacc.net) 607-868-4649  
 Fred Haynes – Newsletter Editor  
[fredmhaynes55@gmail.com](mailto:fredmhaynes55@gmail.com) 585-203-1733  
 Bill Lesniak – Website Coordinator  
 Glenn Weiler – Workshop Coordinator  
[gwexterior@gmail.com](mailto:gwexterior@gmail.com) 315-594-8478  
 Linda Schmidtgal – Collection Curator  
 Eric Elias: GEMFEST Show Chair  
[thecrystalnetwork@hotmail.com](mailto:thecrystalnetwork@hotmail.com)  
 Fred Haynes – Facebook Administrator  
 Jim Rienhardt – Sand Chapter [siderious@gmail.com](mailto:siderious@gmail.com)

Club meets 2<sup>nd</sup> Friday of each month starting in Sept.  
 Social meeting at 6:30 PM Regular meeting at 7:00 PM  
 Park Presbyterian Church, Maple Court, Newark, NY

Website – <http://www.wcgmc.org/>

Dues are only \$15 individual or \$20 family for a full season of fun. Renewal is in October. Send to:

**WCGMC, P.O. Box 4, Newark, NY 14513**

