

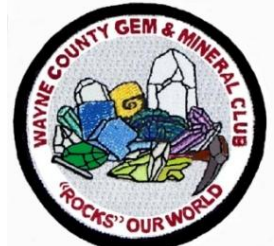
Wayne County Gem and Mineral Club News

January, 2022

Always Looking for Places to Dig!



WCGMC Holiday Party – December 10th More on pages 2 and 6



<http://www.wcgmc.org>

FACEBOOK link



THREE JANUARY EVENTS:

Mark your calendars

Fri. January 14th – Monthly Meeting

Program: Echinoderms

by Stephen Mayer

(rescheduled from November)

(see page 3 of the [November newsletter](#))

Saturday Club Workshop

January 15th

(10:00 AM until mid-afternoon)

Where: 6676 E. Port Bay Rd, Wolcott, NY

Eye protection is required.

Training on equipment is available.

\$5/adult to offset maintenance costs.

The February workshop will be Feb. 12th



Sat. January 29th Field Trip **Museum of the Earth in Ithaca**

We will have a sign-up for this museum visit so that folks can be notified of any weather-based change. You can sign up at the January workshop or the January meeting or by sending a note to the trip leader.

We will meet at the Museum of the Earth lobby at 10:30 AM Saturday January 29th. We will get a group discount on admission if enough members attend. Saturday, February 5th will be a make-up date.

The [Museum of the Earth](#) is located at 1259 Trumansburg Rd. (Highway 96) about two miles northwest of Ithaca, New York

Trip Leader – Stephen Mayer

Contact – [StephenMayer054\(at\)gmail.com](mailto:StephenMayer054(at)gmail.com)



Thank you all
by Linda
Schmidt Gall



With Covid continuing to affect our lives and with a different venue to consider, I worried a little about how well our Christmas Party would go. How many would feel comfortable attending and how I would accomplish all that needed to be done? I guess I did not have to worry about either of these things. We had great attendance and, when I asked for preparation help, a number of folks stepped forward.

Several members took time from their busy schedules to help with wrapping up gifts, place settings, decorations, prizes for the entertainers and more. I want to thank Teresa, Nancy, Kathleen, Debbie, Beth and Heidi for coming to my house to help an eccentric lady with her plans. Theresa actually visited several times. It was work, but it was also a lot of fun.

Did you look carefully at those little molded place holders (see title box)? I used a silicone mold and embedded quartz crystals from the club collection into a two-part resin mixture. The stones inside are beach stones from Cape May, New Jersey. I went there twice in 2021. Look carefully: you may even have a Cape May diamond inside yours.

Of course, there was a need for help at the venue also. Tables to re-organize, decorations to setup, and then all that clean-up. I was so busy upfront with entry tables and the gift table, that I was surprised when I looked up and saw all the tables perfectly lined up and folks asking for the decorations that would be placed on them. And how nice it was to be able to sit back (well sort of) and watch everyone return the tables to their original configuration. Beth had even taken pictures of the table arrangement when we arrived. How thoughtful. And I know there were workers in the kitchen cleaning everything we had used. I did not see much of that. I try to steer clear of kitchens!

The food was just as great. There sure were lots of desserts! I guess we know what this club likes. As usual, EvaJane did a wonderful job with the ham and potatoes and I'd like to thank Laura for those delicious rolls once again.



What awesome entertainment these members provided, twelve wonderful skits. There was singing, music, jokes, and even juggling. There is so much talent in this club. They received crystal globes filled with polished stones and glitter for sharing their talent with us.

As we move into a New Year, I have others to thank from last year also. As most know we moved our club collection from my garage to a storage container behind the workshop in Wolcott. We would be very remiss for not thanking Glenn and Eva Jane for allowing us to use a bit more of their backyard for the club and to Glenn for building the shelving inside the container. Several helped me this fall with the move itself, I am probably forgetting folks who helped, but Bob, Ed, and Bill were certainly foremost among them. As all know we have a lot of rocks!

=====



While we are handing out thanks, there is one person Linda did not acknowledge. We all owe Linda both thanks and kudos for planning and leading another excellent and flawless WCGMC event. Here, she leads us in Jingle Bells, Jingle Bells, Jingle Bells, ROCK, with a special emphasis on that final word.

Yet another garnet find by Kathleen Cappon

The month of January seemed appropriate for a short story about garnets. It is the birthstone for this month and the New York State gem. Garnets come in many colors and they are, of course, one of my favorite minerals to collect. There are incredible articles about garnets in several of our past newsletters. Look up and read about them in [January of 2016](#) and [January of 2018](#), and now January 2022.

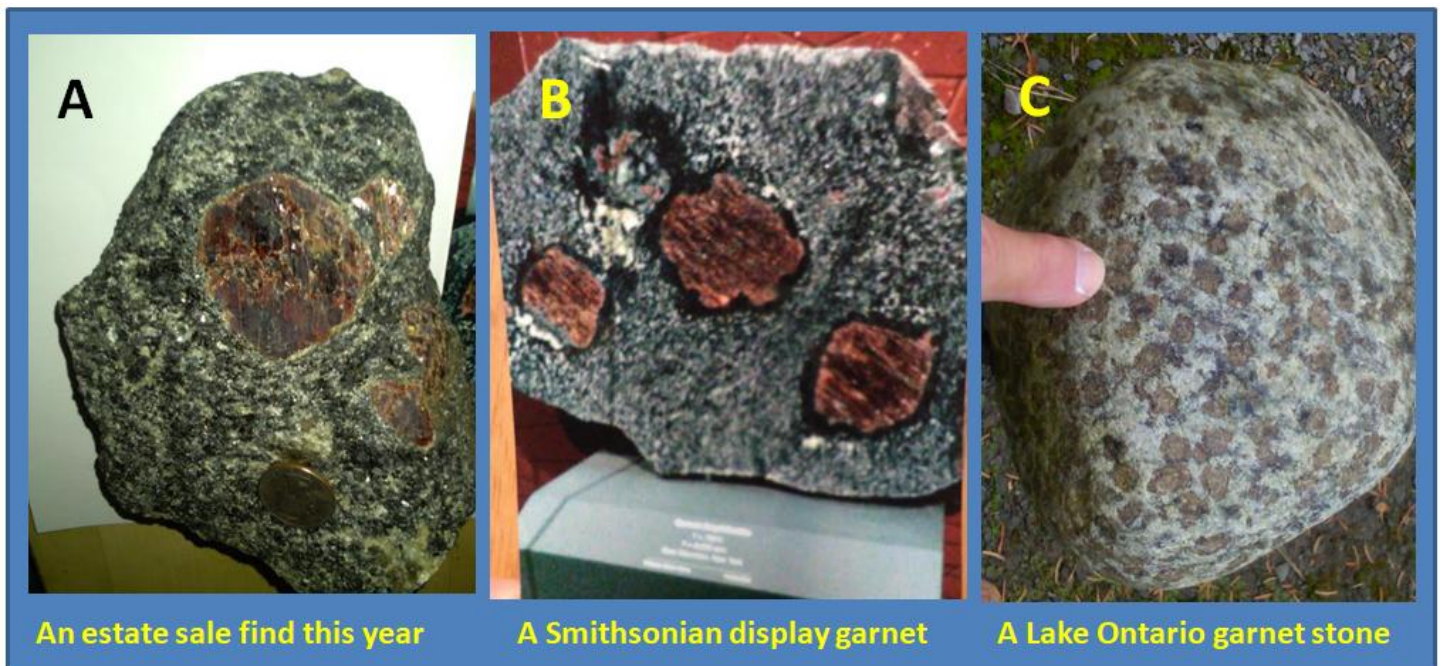
My collection consists of many local rocks from the size of an egg to a large hedgerow boulder filled with hundreds of small shiny red specks. Most come from the shores of Lake Ontario, and have been naturally tumbled to expose their red gems. I have found other rougher garnet-bearing stones in the glacial till near my property in Walworth. The Lake Ontario rocky shoreline along the bluffs in Wayne County is prime hunting grounds for garnet-rich gneiss.

I hope to find one ideal enough to cut and polish into a large sphere! My trips to the lake are winding down now with the cold weather and I have added a dozen or more garnet finds to my

“yard rock” piles (one is shown in Figure C below). However, this late fall I did come upon a rock find at an estate sale that was most interesting. About the size of a small shoulder roast, there it sat on a table beside some old cameras and fishing lures. The piece contained several big garnets in dark speckled metamorphic matrix (Figure A below).

I found out from a family member at the sale that his father collected the garnet stone from Gore Mountain. For \$8.00 I walked out of the sale pretty happy with the find but I knew I had seen a very similar garnet when I visited the Smithsonian Museum two years ago. I took many pictures of the rocks I liked at the museum that day. You can see that the museum picture of the garnets (Figure B.) and the picture I have of this recent find are similar. The museum specimen's label reads “Gore Mountain, New York”

It certainly pays to visit yard and estate sales. People collect many strange and interesting things and among those collectors, someone is liable to be a rockhound!



An estate sale find this year

A Smithsonian display garnet

A Lake Ontario garnet stone

Rhodochrosite: Two forms and two hobbies by Fred Haynes

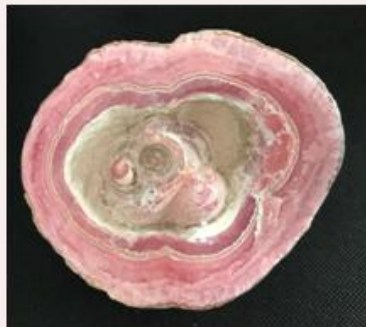
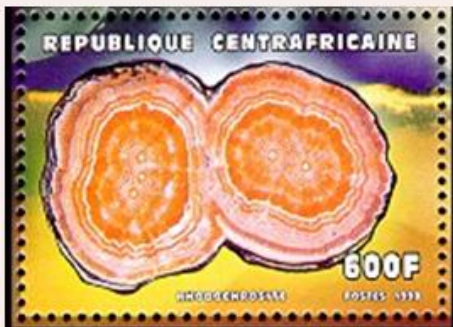
Many of you know that in addition to collecting minerals (the real thing), I also collect them on little scraps of paper called postage stamps. And once in a while I like to compare my specimens with those depicted on stamps. Sometimes they even look similar.

Rhodochrosite is a manganese carbonate mineral (MnCO_3) that is prized by crystal collectors and lapidary artists for its form and rich color. Rhodochrosite can be deep red, but my specimens, both a cut and polished stalactite from Capillitas Mining District in northwestern Argentina and a crystal cluster from the Butte Mining District in Montana, are a pretty shade of pink. I acquired the Colorado specimen more than 30 years ago at the Tucson show. The Argentina piece was part of the WCGMC collection that I was fortunate enough to acquire just a few years ago.

As for the stamps, the United States diamond shaped stamp is part of a 4-stamp set issued in 1974 to commemorate our country's mineral heritage, Amethyst, tourmaline, and petrified wood are featured on the other ten-cent stamps. For those of you old enough to remember, that was the first class postal rate at that time. The Central African Republic

issued 12 stamps featuring colorful minerals in 1998. I cannot find any documentation about the sources of the minerals on their stamps, but I am almost certain the rhodochrosite on the 600 franc stamp comes from the same Argentina location as my stalactite. The specimens from this location are truly unique and therefore also quite valuable..

Although my crystalline specimen from Butte, Montana is from a location almost 800 miles northwest of Alma, Colorado and the Sweet Home Mine, they sure do look alike. The color is similar and the clusters of 6-10mm rhombohedral crystals are almost a perfect match. In addition, both do come from western US mining districts with rich histories. The Alma District in Colorado was mined for silver in the second half of the 19th century. Butte saw a much longer and more varied mining history. From the mid 1860's until early in this century various mines opened and closed. The district is sometimes referred to as the Butte Au-Cu-Ag-Mn-Zn-Pb-Se-Cd-S-Te-Bi Mining District. I'll save you the trouble, that's 11 different elements that were, one time or another, recovered from mines in the immediate vicinity of Butte, Montana.



Upper left: 1998 Central Africa postage stamp featuring rhodochrosite

Upper right: My specimen of a rhodochrosite stalactite from Argentina. (4" across)



Lower left: A miniature specimen of rhodochrosite from Butte, Montana in my collection.

Lower Right: Rhodochrosite on 1974 US postage stamp from the Sweet Home Mine in Colorado. (1 3/4" across)

Splendid Sands Calendar

January 2022

Paredão Island, Alcatrazes Archipelago,
São Paulo, Brazil



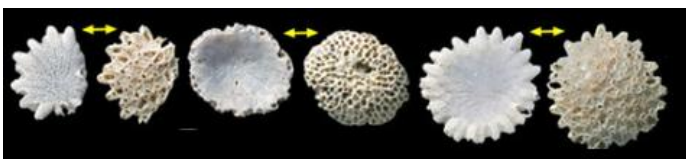
Photo by Leo Kenney

by Leo Kenney, Kate Clover & Carol Hopper Brill

Protected within Albrook Marine National Park, Brazil's Alcatrazes Islands are about 35km off the coast. Isolation from the mainland has allowed evolution of endemic species. Four hundred invertebrate species are reported from the marine environment. Some of that diversity is visible here.

Echinoderms are represented by purple, green and pink sea urchin spines, plus fragments showing the socket at the base of a spine and the ball-like base on which it sits (7 o'clock and 1 o'clock). A knobby grain resting on the green spine is a fragment of sea star skeletal mesh.

But there is more here than just echinoderms. Perforated sheets and rods are from calcified bryozoan colonies, as is the daisy-like disc at 12 o'clock. Below that disc, a curved plate with 3 parallel walls is part of a barnacle's external shell. Mollusc remains include the wavy piece of a bivalve shell at 9 o'clock and the ribbed square at 5 o'clock. Gastropods range from a white limpet-like shell, bottom left under the scale bar, to the ribbed, tube-like shell of a *Caecum*, left of the bryozoan disc.



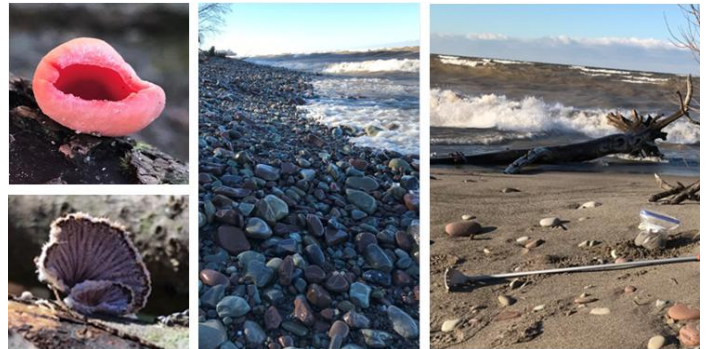
Red Creek Marsh Unit, Lake Shore Marshes WMA

December 17, 2021



Just another pretty picture of a less visited spot along the Lake Ontario shoreline in Wayne County.

A modest onshore wind was kicking up some waves on the mighty lake that day, but the well developed barrier sand bar was blocking the waves from disturbing Red Creek Marsh behind the bar. You will have to enlarge the photo on screen to see them, but there are four majestic white swans on the far side of the marsh.



Some more scenes from the Red Creek Marsh Unit

There were fungi to view on the way down to the barrier bar (Scarlet cup, *Sarcoscypha* sp. and split gill, *Schizophyllum commune*). And, of course, there were rocks to be observed and sand to be collected once on the sand/rock bar.

by Fred Haynes



You can follow each month's sand in the newsletter OR you can purchase your own Splendid Sands calendar for 2022. Visit <https://www.splendidsands.com/2021calendar>

You cannot understate the creativity and talent of WCGMC members. Beth Webster, Jennifer Pierce, and Heidi Morgenstern rewrote this popular Christmas song, recruited a couple others to help them sing it, and then entertained us all at the club party on December 10th. You had to be there to see the premiere performance, but we thank the group for allowing us to publish their work here.

Sung to the tune of:

Grandma Got Run Over By a Reindeer

Refrain:

Grandma got run over by a HAUL TRUCK
Walking home from the ROCK SHOP Christmas Eve
You can say there's no such thing as ROCKHOUNDS
But as for me and ROCK CLUB, we believe

She'd been drinkin' too much COFFEE
And we'd begged her not to go
But she'd left the TUMBLER RUNNING
And she stumbled on some rocks into the snow

When they found her Christmas morning
At the scene of the attack
There were GOGGLES on her forehead
And MINING TOOLS LAID ACROSS her back

Repeat refrain:

It's not Christmas without Grandma
All the CLUB IS IN BLACK SMOCKS
And we just can't help but wonder
Should we RAFFLE OFF HER ROCKS OR SLICE 'EM UP?

Now we're all so proud of Grandpa
He's been taking this so well
See him in there WINNING RAFFLES
And playin' WITH HIS XYLOPHONE JINGLE BELLS

Repeat refrain:

Now the FLAT LAP is on the table
And the FACETING MACHINE
WITH a blue and GOLD SPHERE
That WOULD'VE matched the STONE in Grandma's RING

I've warned all my friends and neighbors
Better watch out for yourselves
They should never give a license
To a man who drives a HAUL TRUCK & plays with SHELLS

Repeat refrain:



And here are the performers



.... and the appreciative audience.

And if that is not enough creativity for you, look what Kathleen Cappon brought to the dessert table..



So what the heck is this, you might ask? Let Kathleen explain: Hi, I'm an Oreo cookie Glyptodon dessert. The cookies were applied over cake frosting with food service gloves! So, grab a plate and use the tongs to remove the armor from my back. Bon appetite!

Some sad news to report this month

Long-time WCGMC member and GemFest dealer Tom Beck passed away peacefully at his home on Christmas Day. Tom was 69 years old. May he rest in peace.



Club member, Tom Beck, with rows and rows of geodes he brought to GemFest in 2018.

Tom would delight folks of all ages with his geodes. He would bring his saw along and you could pick out your own geode and he would cut it while you watched. The excitement shown by collectors of all ages as they waited to see what surprise was inside their geode was a joy to watch. Tom will be missed by all who knew him.



Tom Beck is cutting a geode at GemFest 2016 in Canandaigua.

Tom's home rock and mineral club is the Che-Hanna Rock and Mineral Club of Bradford County, PA, about 15 miles southeast of Elmira, NY. Another Che-Hanna club member we all know from his contributions to GemFest sends us this about his friend Tom.

by Bob McGuire (UVBob)

I met Tom several decades ago, I believe through talking about bugs. He was an avid hunter and even did his own taxidermy. Anyway, he mentioned how he attracted insects using UV light. Of course that interested me and he invited me out to a cabin he and friends shared. I arrived late afternoon and after some chit chat, it got dark and we went out about 100 feet into the woods and there was a bed sheet stretched between two trees and a UV light illuminating the sheet. On the sheet were hundreds of insects.

I then introduced Tom to how I use UV and in no time he became a mineral collector. He was always interested in new things. After a trip to Tom's home, I became totally impressed with his many interests. Alongside of a fireplace, were two three-foot tall slab wood carvings of old men, and smaller ones spread around. I got to see some of the flats of perfectly pinned insects he collected. He collected baseball type caps and they were all over the basement ceiling. Tom did a lot of carving including canes/walking sticks. One of which was a cobra with inlaid designs and eyes, fangs and tongue. His interest in snakes had him raising them and giving snake talks with his collection at schools, clubs etc.

His first year at our Che-Hanna Show really got him into minerals. He saw how our geode room with two worm fed cutters would allow us to sell two tennis ball size geodes per hour. The next year he brought his saw and showed our guys how to cut about 40 geodes an hour. Our great kitchen was our top earner, but Tom's geode cutting blew the kitchen out of the water. His mineral collection grew as he expanded into cabbing and wire wrapping and cutting geodes at other shows.

Tom was also an excellent painter. In recent years he experimented with the drip painting and even discovered a few new tricks. He painted on everything, including feathers. His work was superb.

Simply put, Tom was a super fantastic guy who will be missed by many.

Wayne County Gem & Mineral Contacts

ELECTED OFFICERS

President – James Keeler

[jamesrocks\(at\)jkeeler.com](mailto:jamesrocks(at)jkeeler.com)

Vice-President – Holly Woodworth

[autum14513\(at\)yahoo.com](mailto:autum14513(at)yahoo.com)

Secretary – Beth Webster

Treasurer - Bill Lesniak

Board of Directors

Bob Linderbery

Heidi Morgenstern

Karen Wilkins

Ed Smith

Past President – Linda Schmidtgal

Visit us on Facebook:

<https://www.facebook.com/groups/1675855046010058/>

APPOINTED POSITIONS

Bill Chapman – Field Trip Chair

Stephen Mayer - Fossil Field Trip Leader

Fred Haynes – Newsletter Editor

[fredmhaynes55\(at\)gmail.com](mailto:fredmhaynes55(at)gmail.com)

Bill Lesniak – Website Coordinator

Glenn Weiler – Workshop Coordinator

Linda Schmidtgal – Collection Curator

Fred Haynes – Facebook Administrator

Jim Rienhardt – Sand Chapter

Club meets 2nd Friday of each month starting in Sept.

Social meeting at 6:30 PM Regular meeting at 7:00 PM

Park Presbyterian Church, Maple Court, Newark, NY

Website – <http://www.wcgmc.org/>

Dues are only \$15 individual or \$20 family for a full season of fun. Renewal is in October. Send to:

WCGMC, P.O. Box 4, Newark, NY 14513

